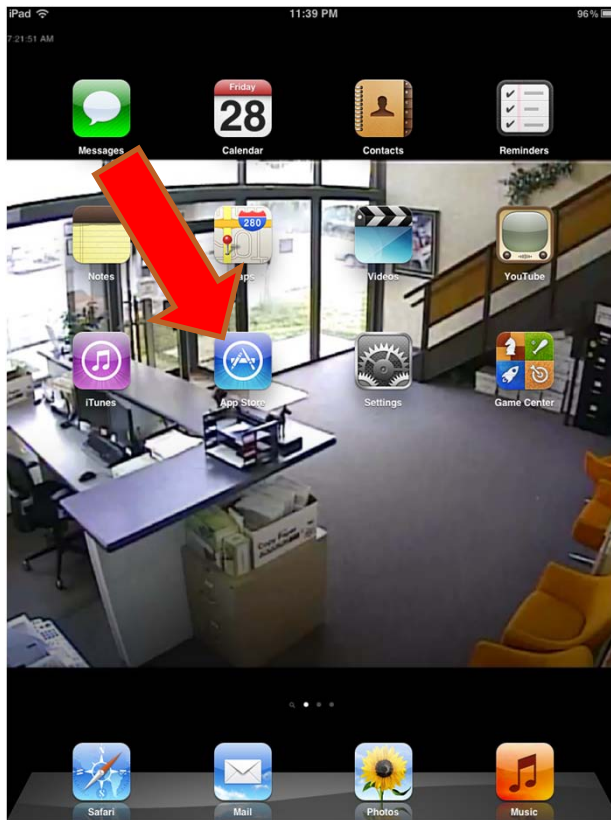


# How to install “DW VMAX” app On your iPhone and iPad

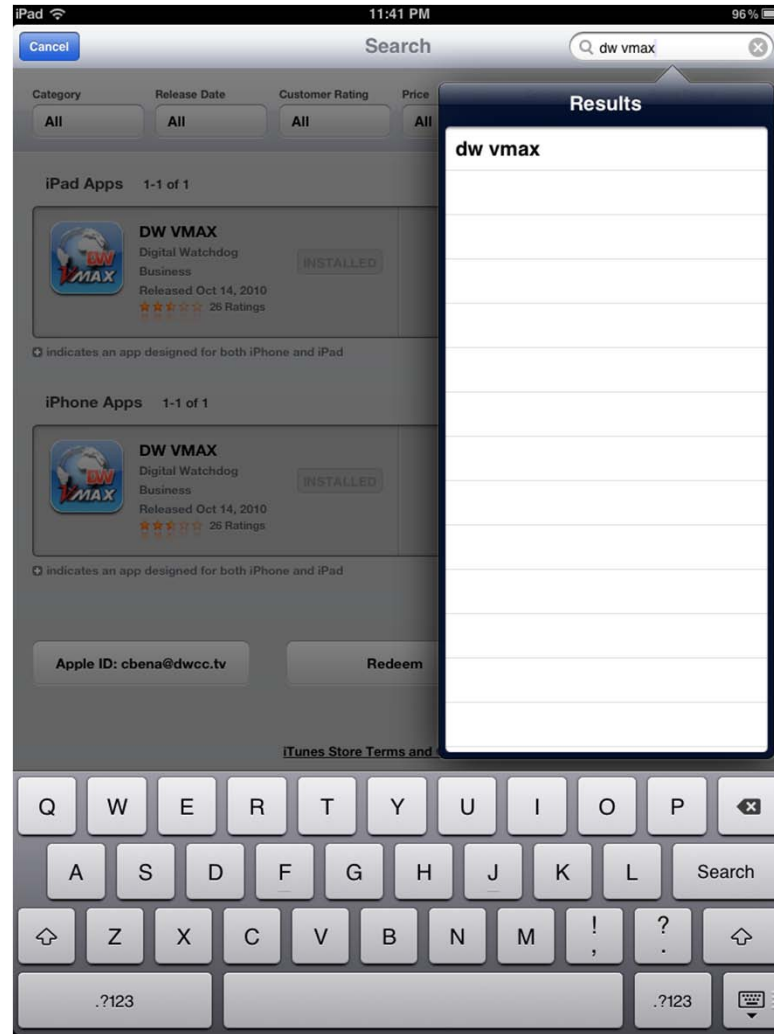
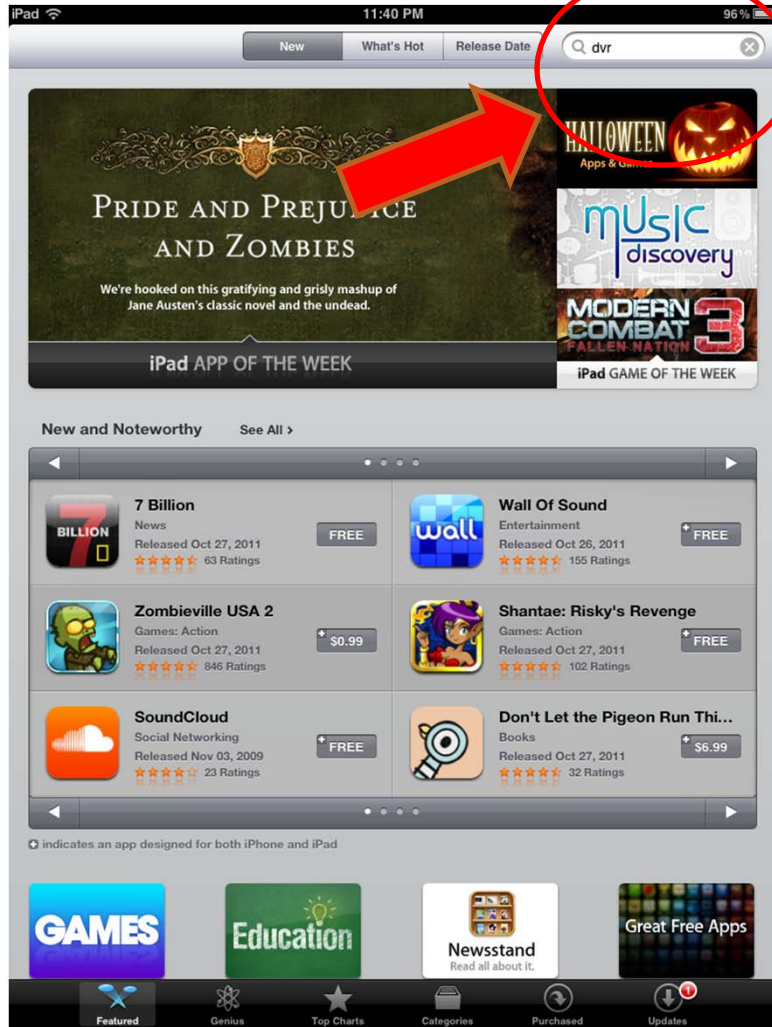
The application is free and can be downloaded from the iTunes store or the App store directly to your mobile device

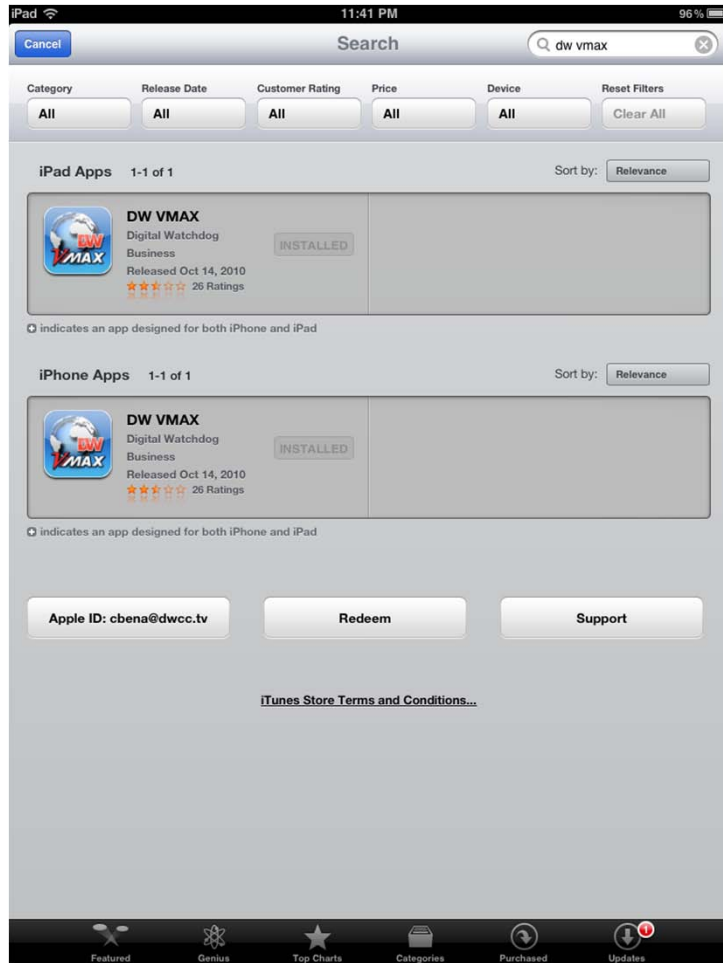


1. Enter the app store on your iPad or iPhone



## 2. SEARCH FOR “DW VMAX”

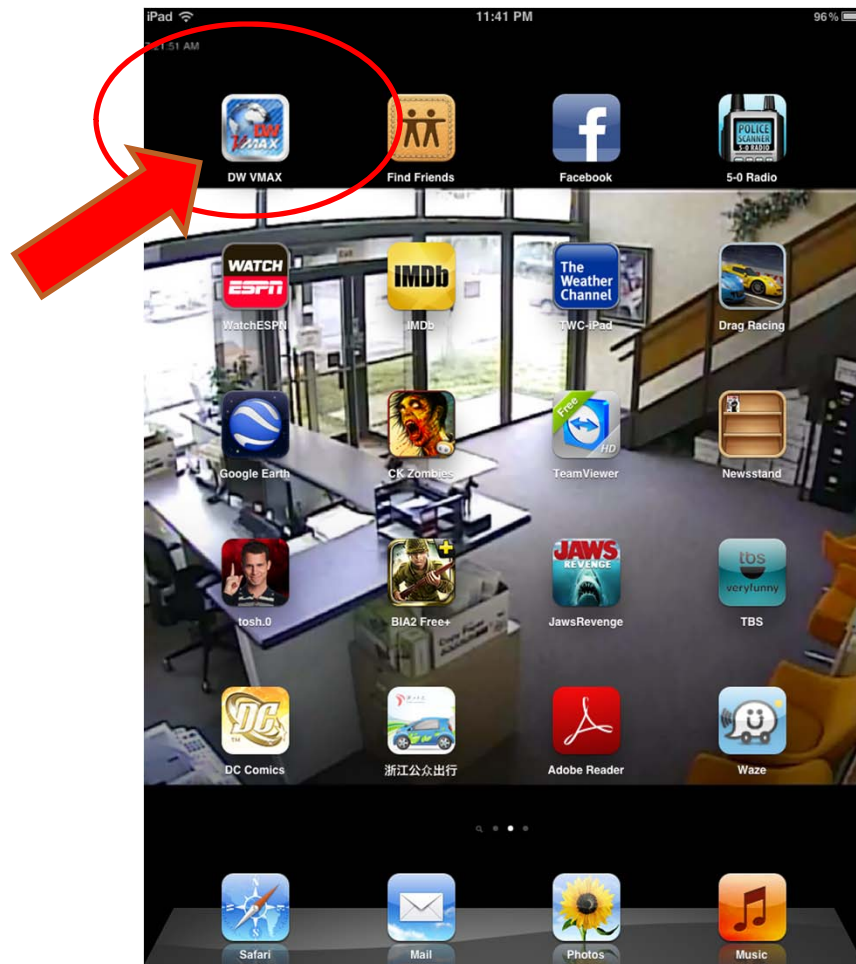




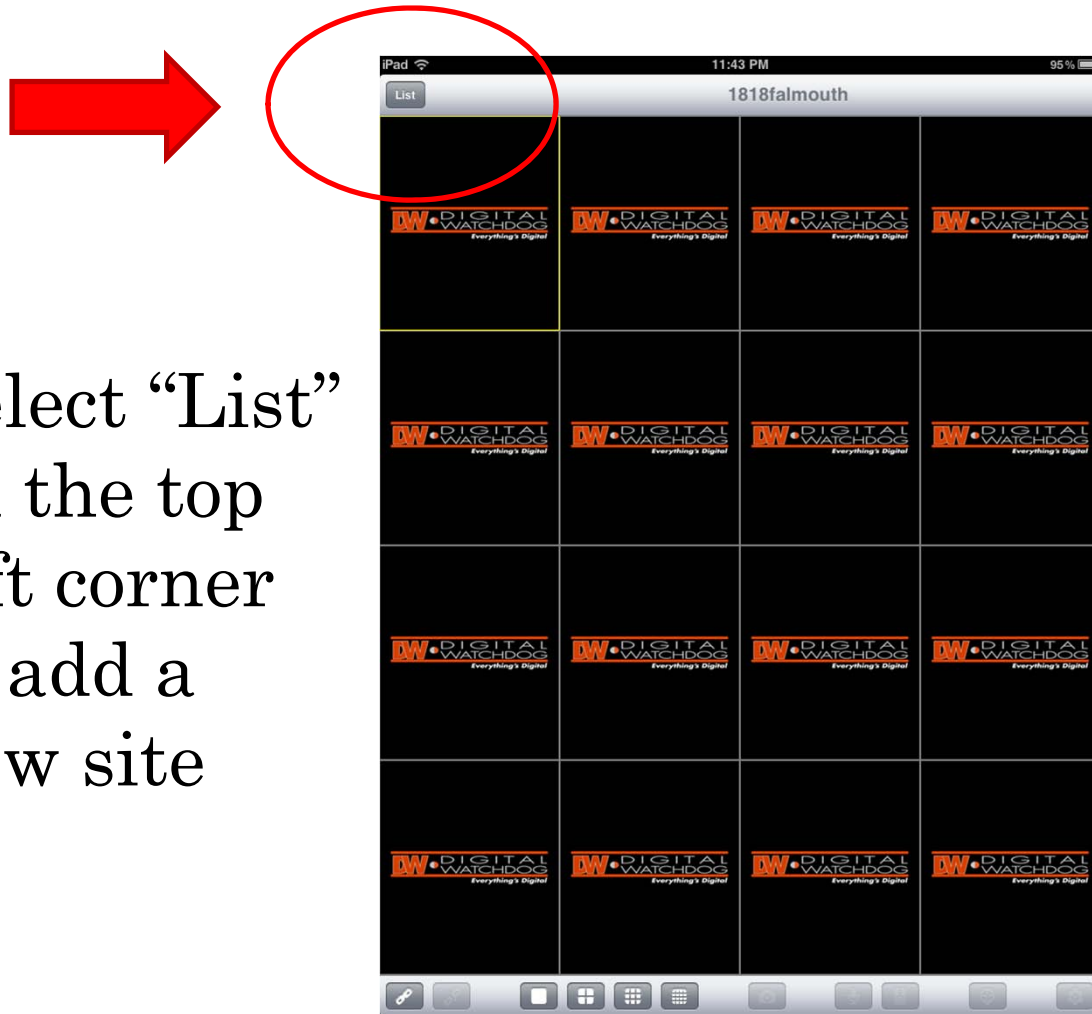
3. Select the IPHONE or IPAD version depending on what device you have
4. Install application



5. Select the DW VMAX Icon on your home screen and Launch the App



6. Select “List”  
on the top  
left corner  
to add a  
new site



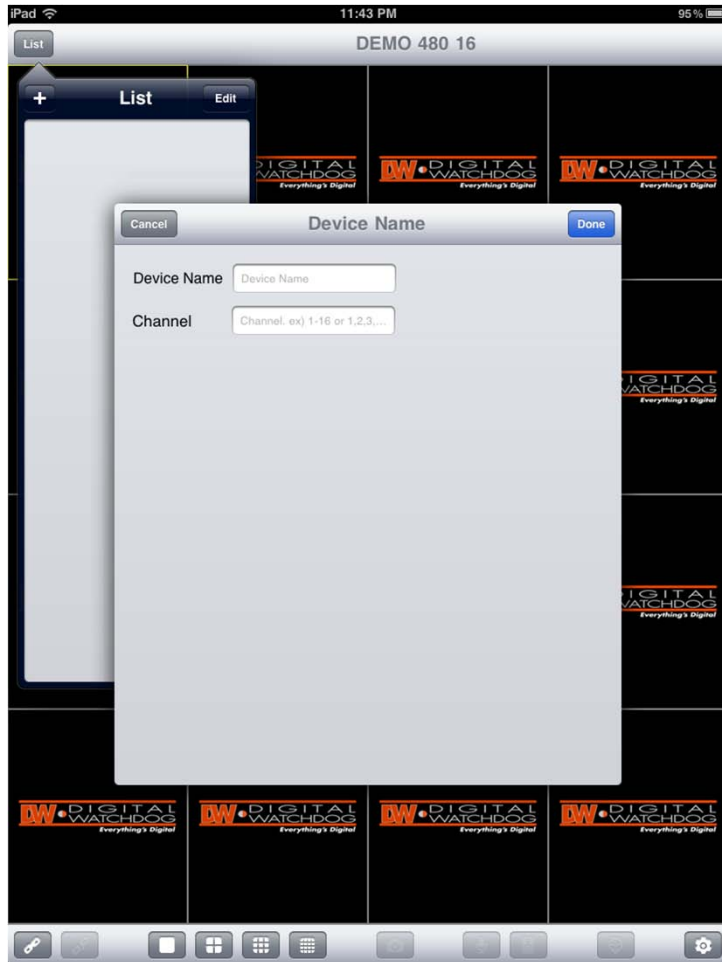
7. Enter site, IP, portal, user ID and password information
8. All fields must have entries and matched correctly to the VMAX you wish to connect

The screenshot shows an iPad interface for a configuration tool. At the top, it says 'iPad', '11:43 PM', and '95%' battery. Below that is a header 'List' and 'DEMO 480 16'. The main content area is a list of items, each with a 'DIGITAL WATCHDOG' logo. A modal form is overlaid on top, with a 'Cancel' button on the left and a 'Save' button on the right. The form contains the following fields:

- Name: empty
- Ch.: empty
- Address: empty
- Port: 0
- Web Port: 30
- User ID: empty
- Password: \*\*\*\*
- Model: VMAX

Red arrows point to each of these fields, indicating they must be filled out. The 'Model' field is pre-filled with 'VMAX'.





9. Enter the site name or the private DVR name
10. Add the channel group for your unit. For example (1-4, 1-8, 1-16)
11. Select “DONE” when finished



12. Enter the IP of your personal DW-VMAX system, or the Digital Watchdog VMAX Demo IP.

- If connecting locally via Wi-Fi, input the local IP address of the VMAX. For example (192.168.1.160)
- If you are connecting to the VMAX via 3G, enter the DDNS address. For example (mydvr.dwdns.net)

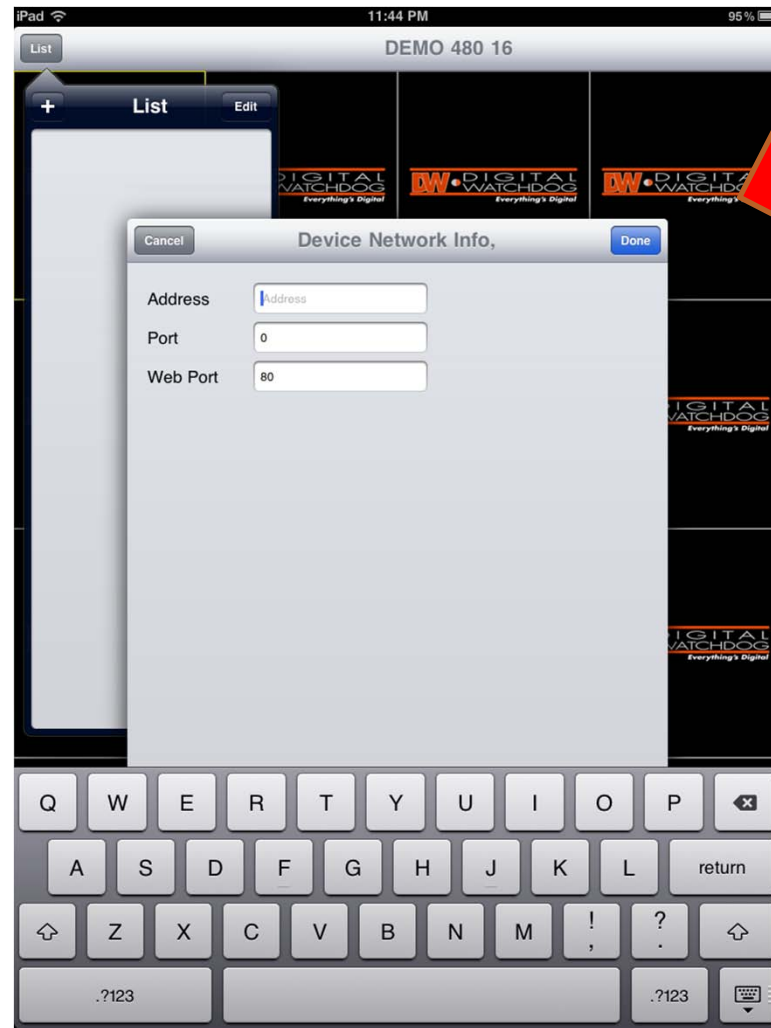


13. Port: 9011 (by default)

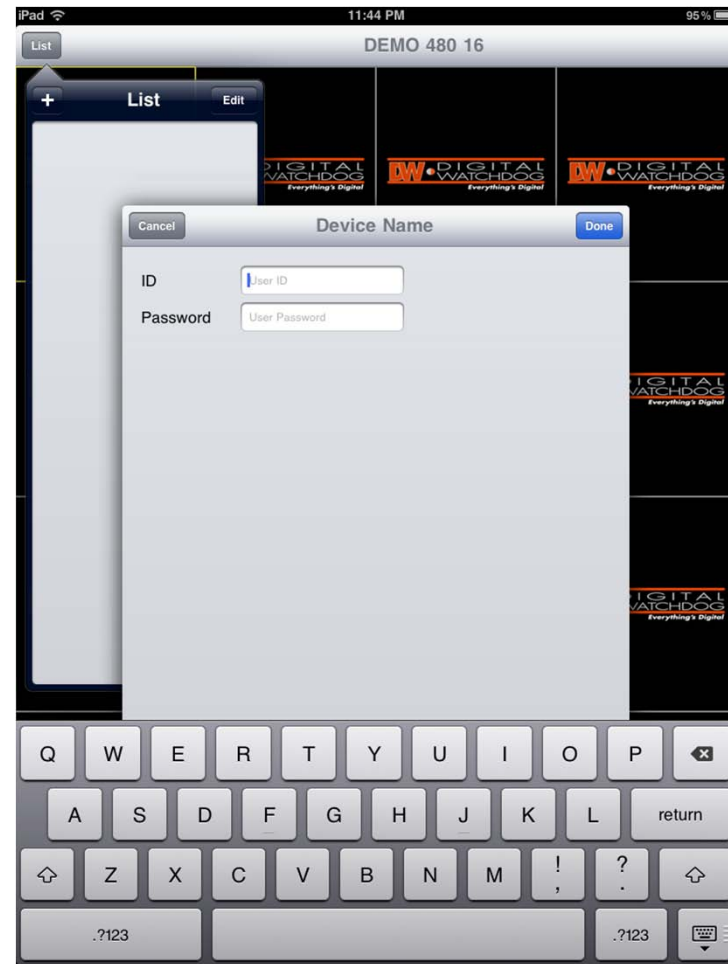
14. Web Port: 80 (by default)



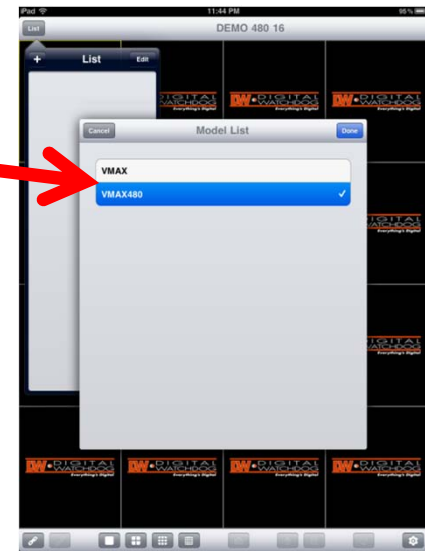
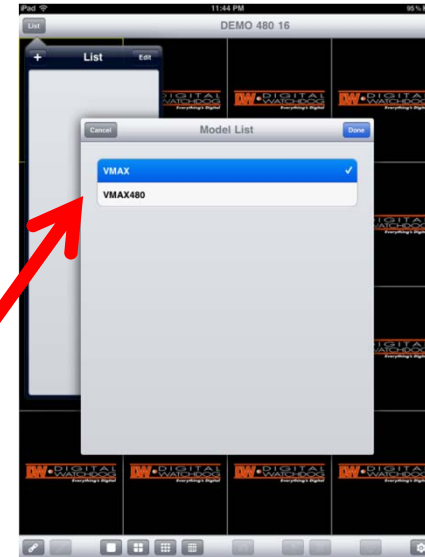
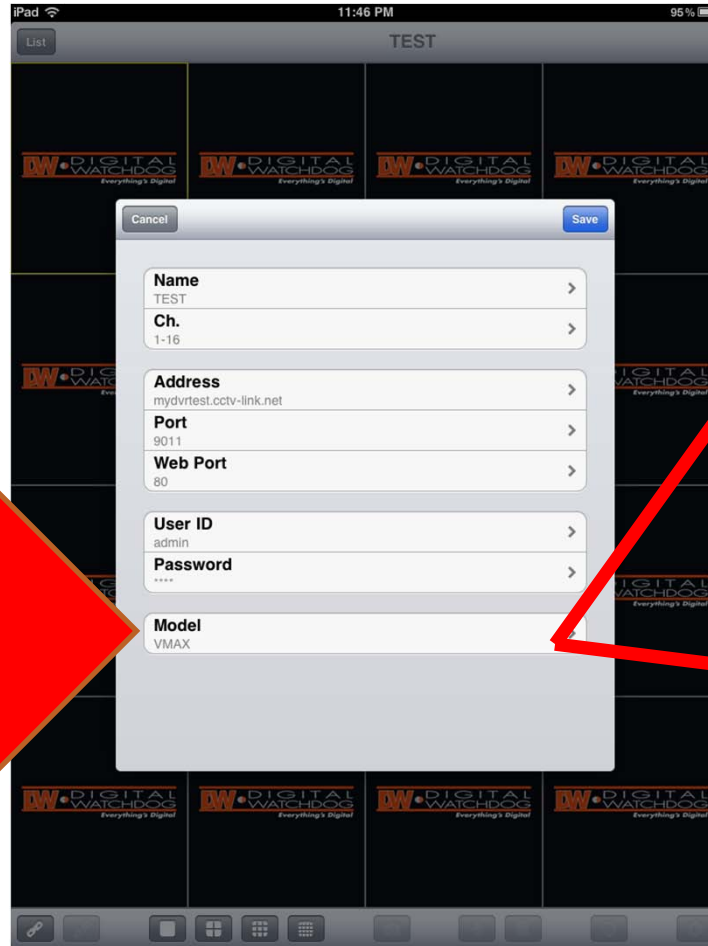
AFTER INPUTTING ALL INFORMATION  
CLICK ON “DONE”



15. Input the Default ID = admin or any user profile that has been created on the VMAX
16. Enter password. If no password was created leave this field blank
17. Select “done”



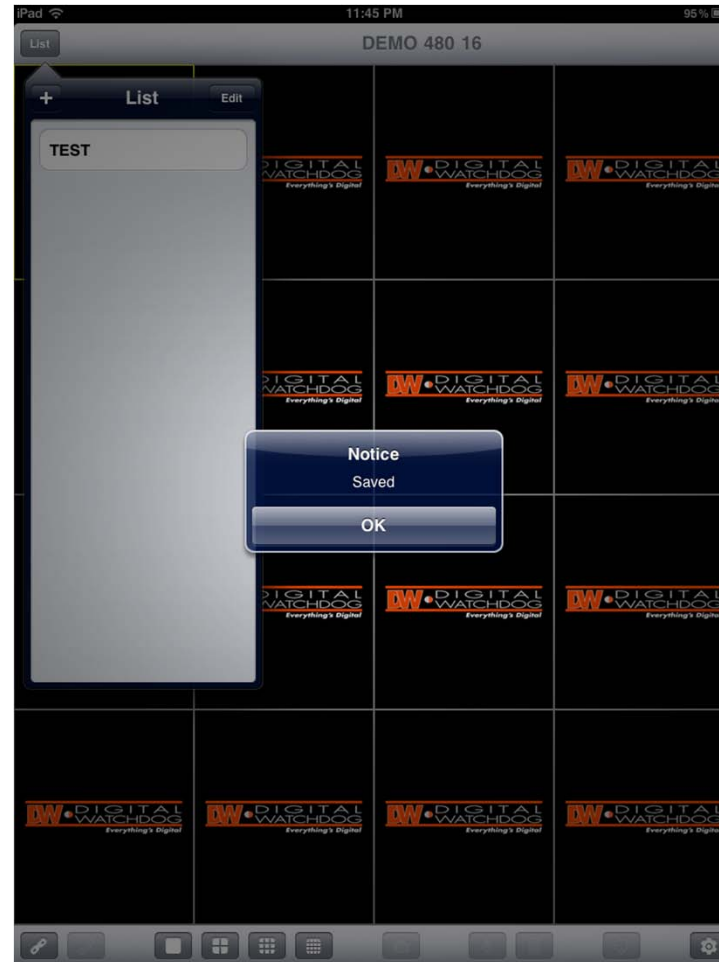
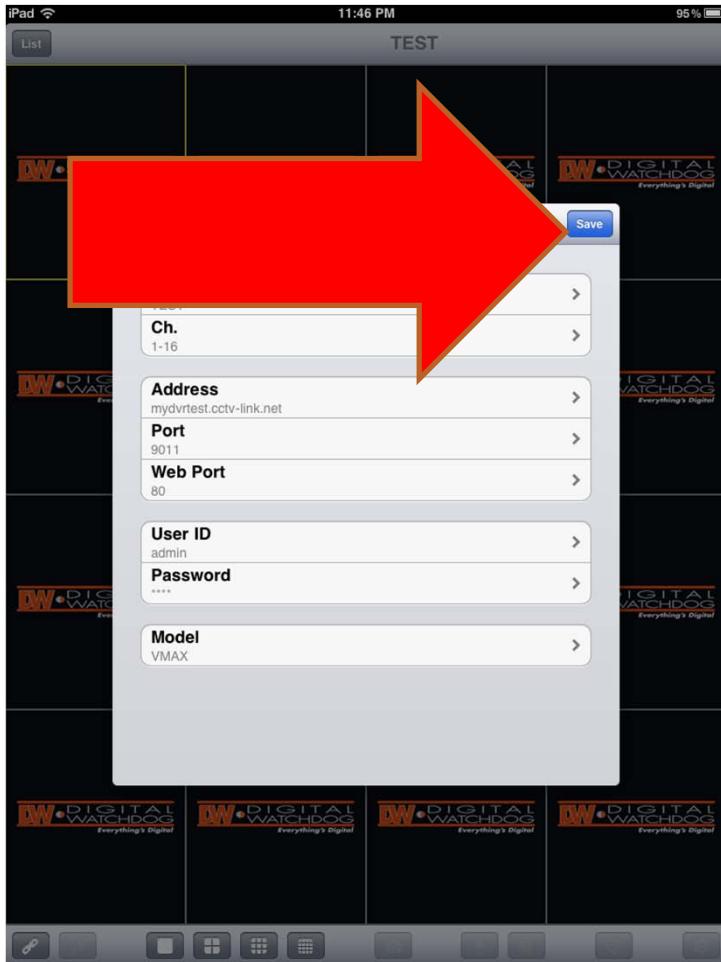
18. Select the model type of the VMAX you are trying to view



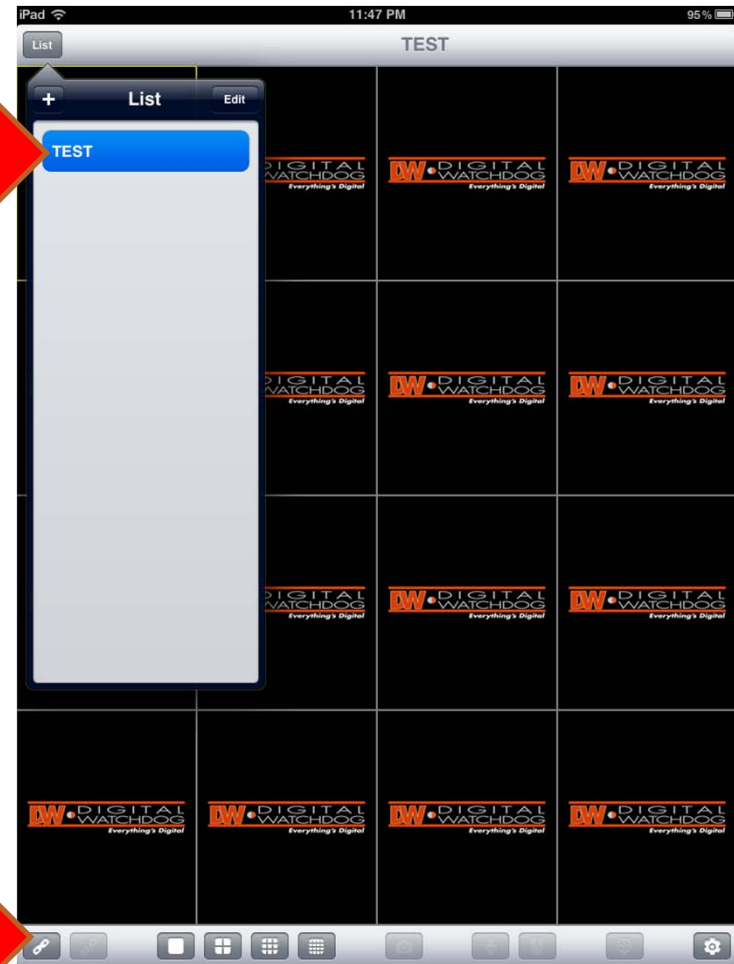
REMEMBER:  
ORIGINAL VMAX HAS ALL SILVER BUTTONS  
VMAX480 HAS ALL BLACK BUTTONS ON FRONT PANEL



18. Click on “Save”
19. The new registered site should appear in the main page of the application

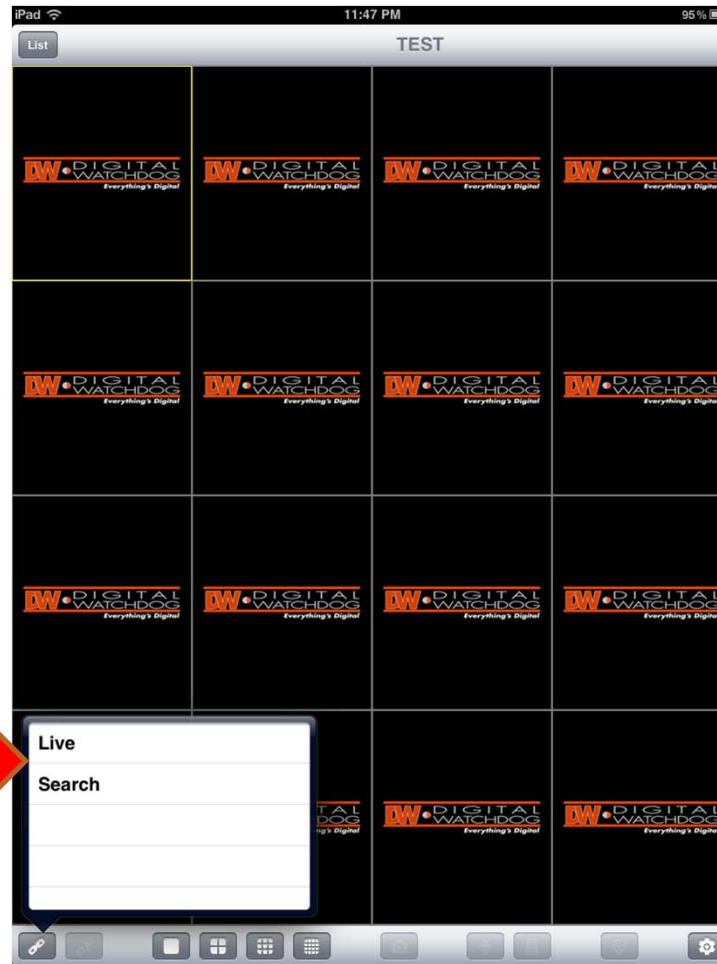


20. Select the desired network



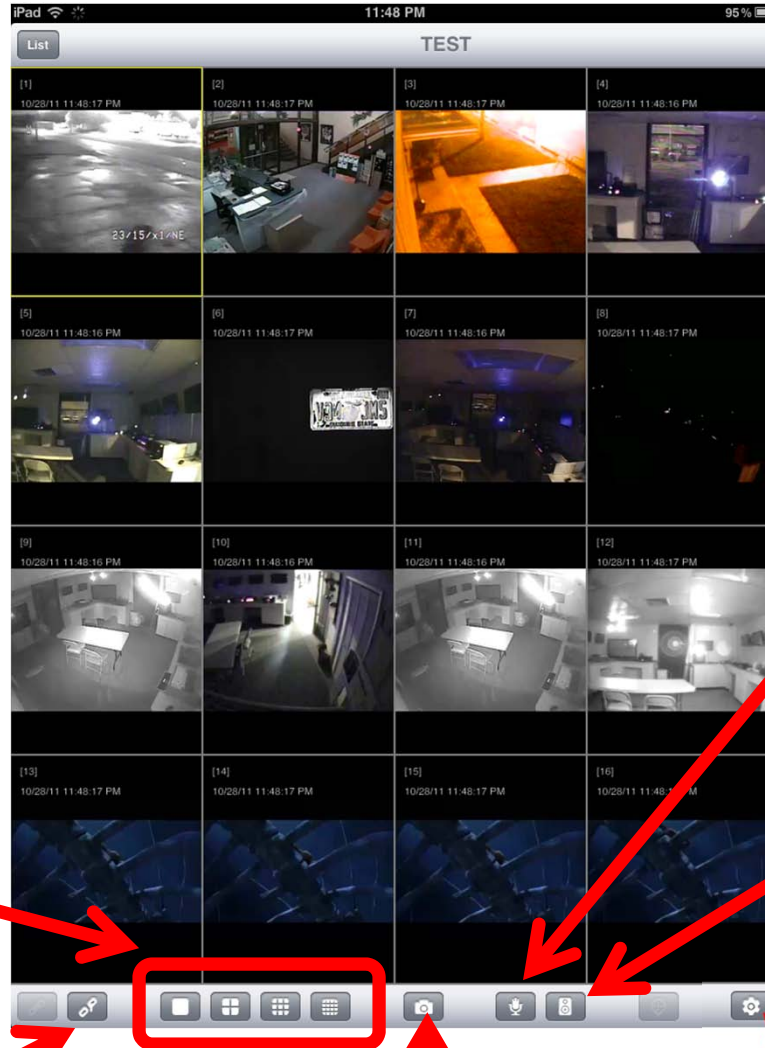
21. iPhone- press “connect” next to the site name
22. iPad- select “connect” on the tool bar at the bottom of the screen





23. Once in the desired network, select either LIVE or SEARCH view
24. Manage your view by selecting the camera number you wish to see

# FEATURES



Viewing Mode

Disconnect

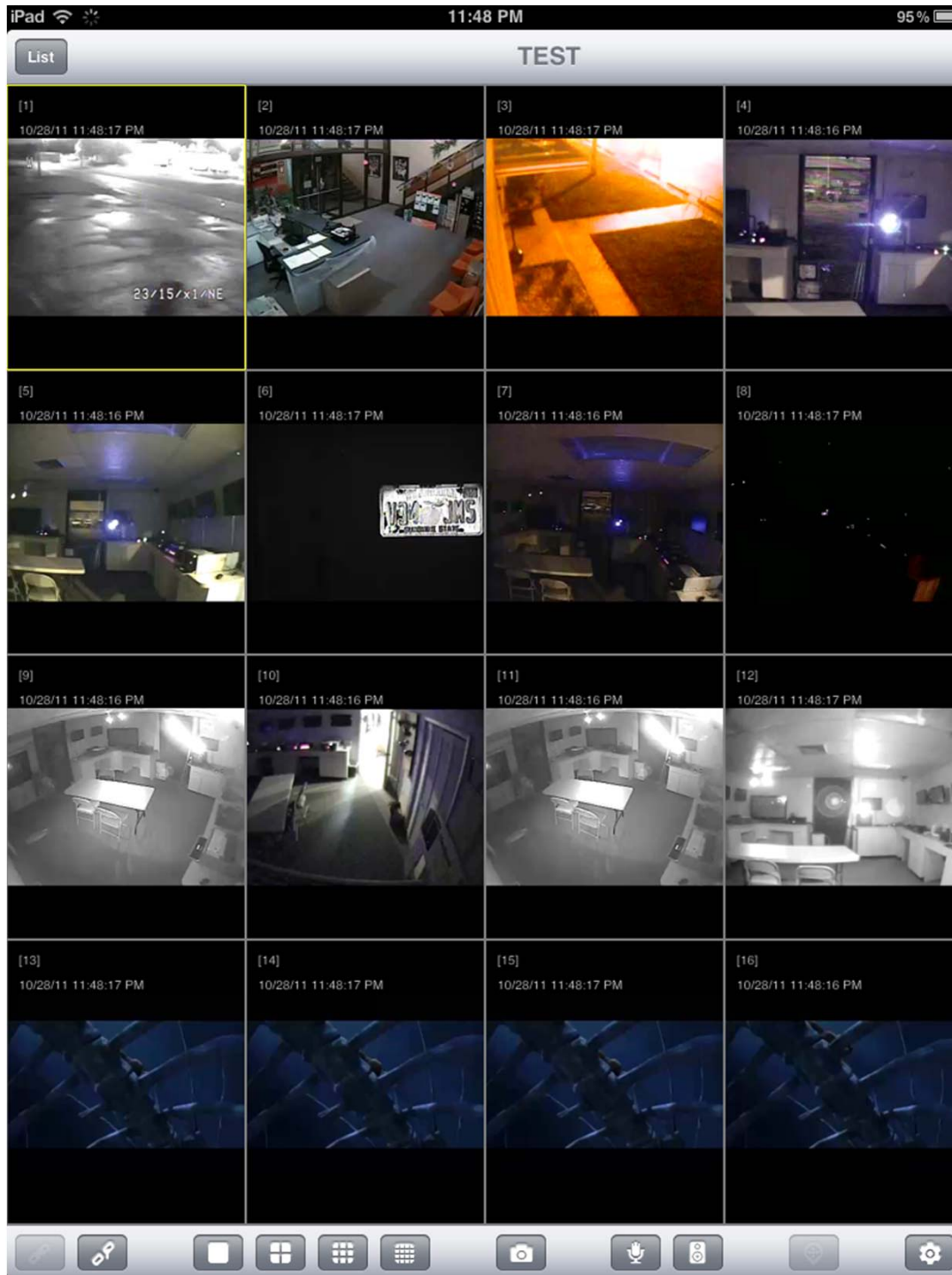
Snap Shot

Two – Way Audio Icon

Live Audio Icon

Settings





Digital Watchdog, 5436 West Crenshaw Street, Tampa, Florida. 813.888.9555  
Serving the digital community since 1987, 24 years.

Copyright © 1987 - 2011 KALTECH Electronics, Inc., DBA Digital Watchdog. All Rights Reserved.

Unless otherwise indicated, all materials including without limitation to textual content and graphics in this web site are copyrighted by KALTECH Electronics, Inc. Distribution, posting, or copying is strictly prohibited without written permission from KALTECH Electronics, Inc. Digital Watchdog and the Digital Watchdog logo are registered trademarks of KALTECH Electronics, Inc. in the United States and other countries. All other trademarks are the property of their respective owners.

\*\*\*Connection to the VMAX system is available only when device is connected to a Wi-Fi network\*\*\*

\*\*\*Currently, the DW VMAX app is not supported on iPod touch devices\*\*\*